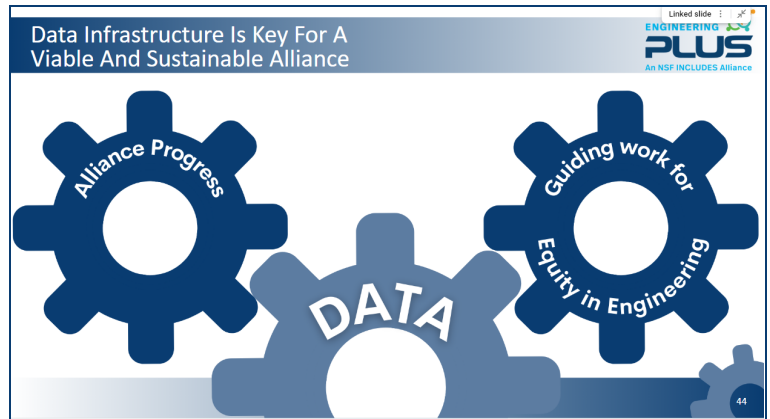


# Continuous Improvement - Data - Evaluation - Research (CIDER)

Engineering PLUS is unique among the INCLUDES Alliances in that we have a CIDER team baked right into the Alliance infrastructure! This KPS is a significant resource to Engineering PLUS, but you may not know how to use us. This handout will give you a brief overview of our plans for year 3. **All of our work depends on a partnership with the greater Engineering PLUS community to ensure that it is relevant and useful.** We're here for the continuous improvement of the Alliance and to have a positive impact on improving engineering education and are building an infrastructure with a long-term vision.



## CIDER Team:

### SageFox

Alan Peterfreund (CIDER Lead)  
 Rebecca Zarch (CIDER General Contact / Research Team)  
 Tyler Clark (**Hubs Liaison** / Research Team)  
 Talia Goldwasser (Data Team)  
 Mike Chery-Winder (Data Team)  
 Jordan Esiason (Data Team)  
 Brianna Johnston (CIDER Support / Backbone Liaison)

### Northeastern University

David Kaeli (Data Team)  
 Mohith Kota (Data Team)

### CSEdResearch.org

Julie Smith (PEERs liaison / Research Team)  
 Monica McGill (Research Team)  
 Jordan Williamson (Research Team)

### Rath Education Evaluation Research

Ken Rath (Contact for Evaluation)  
 Ami Slater (Partnerships & Sustainability Liaison, Evaluation Team)

### Drexel University

Kayla Maxey (Research Team)  
 Amy Slaton (Research Team)

## Goals and Objectives:

| Sphere of influence   | Infrastructure Element                       | Purpose   |
|-----------------------|--|---|
| Alliance Progress     | Evaluation and Research                      | Continuous improvement  |
| Alliance Progress     | Understanding the Engineering Population     | Track progress towards closing the gap  |
| Alliance Progress     | Eng+ Participation                           | <ul style="list-style-type: none"> <li>Understand our partners / participants</li> <li>Facilitate recruitment and prospecting</li> <li>Report to NSF's Eddie Bernice Johnson INCLUDES National Network</li> </ul>                     |
| Engineering Education | Understanding the context                    | <ul style="list-style-type: none"> <li>Identify the priority problems of practice through data</li> <li>Analyzing and displaying data to inform strategies</li> <li>Understand local, regional and national factors</li> </ul>        |
| Engineering Education | Landscape analysis                           | <ul style="list-style-type: none"> <li>Organize data sources for understanding context</li> <li>Guide Alliance strategies</li> <li>Support partners in individual change efforts</li> <li>Guide the work of HUBs and PEERs</li> </ul> |
| Engineering Education | Tools, Resources, Publications and Workshops | <ul style="list-style-type: none"> <li>Support the work of Alliance members</li> <li>Build capacity for using data for systemic change</li> </ul>   |

## Specific Data Collection in Year 3:

| Activity             | Purpose   | Timeframe | KPS'           | CIDER        |
|----------------------|---|-----------|----------------|--------------|
| Participant Survey   | To better understand the participant experience in the Engineering Plus alliance including PEERs and Hubs Members. This includes perceived value of the community as a resource   | Winter    | PEERs<br>Hubs  | CI<br>E<br>R |
| Focus Groups         | In-depth understanding of the participant experience  |           |                |              |
| Ad-hoc Surveys       | In some cases, CIDER will run short surveys in support of workshops or other events; for example, prior to the CIDER workshop with the PEERs we ran a brief survey to understand the PEER need  | TBD       | TBD            | TBD          |
| Alliance Surveys     | This survey is run with the Engineering PLUS collaborators on an annual basis to monitor how the collaborators feel about their place in the alliance and their assessment of Alliance progress. Findings may inform future research activities.          | Spring    | All            | CI<br>E      |
| Institutional Survey | This survey provides an opportunity for each member institution to self-assess the assets on campus and surface opportunities for shared learning across the Hubs.  | On Going  | Hubs           | CI<br>D<br>R |
| Landscape Tool       | The landscape tool includes a set of interactive dashboards drawing from publicly available data to assist the community in understanding the trends in engineering education at the local, regional and national level                                   | On going  | All            | D<br>R       |
| Research             | The research team is exploring how the Engineering Plus uses data and the social networks to advance the scaling of high impact practices against a historic operative system of sexism and racism in engineering education. See our handout for details. | On going  | Hubs,<br>PEERs | CI<br>R      |

We're not operating alone! There is much more information being collected in Engineering PLUS that we're coordinating with. Examples of other data sets we're connecting to include:

- Participation and membership database
- Event agendas and notes
- Event surveys
- Newsletter information
- Annual reports
- The INCLUDES National Network Survey
- Prospecting information
- Participant artifacts
- Publication

In Year 3 we're going to be developing our infrastructure to be highly coordinated and usable with care and attention to privacy and confidentiality. Below is a draft concept map for our infrastructure.

In addition to working with the data, we support the Alliance through workshops and presentations. We work with PEERs and Hubs in particular to build the capacity of Engineering PLUS participants to work with data. We also present at national conferences to further support the work of the engineering education community.

